

## SN Series Part Numbering



### Features

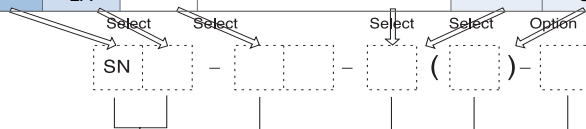
- Push-pull technology
- Miniature circular
- Light weight
- Low cost

### Applications

- Professional audio and video
- CCTV system
- Portable wireless radio
- Factory Automation
- Computers and peripherals
- Medical and much more

### Part Numbering

Product Number		Size	Number of Contacts	Suffix	Optional Suffix		Contact Type	Notes
Series	Prefix				S	B		
SN		8 or 10	8 size : 4,5,6 10 size : 2,3,4,9,10,12	P / PS		●	P	Plug
				PL		●	P	Right-angle plug
				R	●	●	S	Receptacle
				RPCB	●	●	S	PCB receptacle
				LRPCB	●	●	S	Right-angle PCB receptacle
	P / PS				●	S	Plug	
	PL				●	S	Right-angle plug	
	R			●	●	P	Receptacle	
	RPCB			●	●	P	PCB receptacle	
	LRPCB			●	●	P	Right-angle PCB receptacle	
	P				●	P	Plug (Clamp type)	
	P				●	S	Plug (Clamp type)	
				●	●	S	Adapter	
				●	●	P	Adapter	
	P				●	P	Plug (Screw-on type)	
	R			●	●	S	Receptacle (Screw-on type)	
				●	●	S	Adapter (Screw-on type)	



Ordering Part Number  
(see examples)

### Examples

SN - 8 - 4 ( P )  
SN series - Size 8 Plug - 4 Male Contact

SN - 8 - 6 ( RPCB )  
SN series - Size 8 PCB Receptacle - 6 Female Contact

SN - 8 - 6 ( P ) - SB  
SN series - Size 8 - 6 contact ( Block Plug ) - Silver Plating Contact & Black plug housing

SN1 - 10 - 12 ( R ) - S  
SN1 series - Size 10 Receptacle - 12 Female Contacts - Silver Plating contact

SN2A - 10 - 2 - S  
SN2A series - Size 10 Adapter - 2 contact - Silver Plating contact

SN - 8 - 4 ( LRPCB ) K - S  
SN series - Size 8 - 4 contact ( Right-angle PCB receptacle, Any type ) - Silver Plating contact

### Connector Series (Prefix)

SN - SN series  
SNH - Reverse contact  
SN1 - Clamp type plug  
SN1H - Clamp type & reverse contact plug  
SNA - Adapter for SN series  
SNHA - Adapter for SNH series  
SN2 - Screw-on type  
SN2A - Adapter for SN2 series

### Size Option

8,10 B : Black plug housing

### No. of Contacts

8 Size : 4,5,6 10 Size : 2,3,4,9,10,12

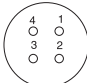
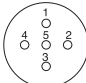
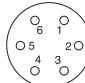
### Body Type

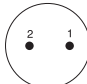
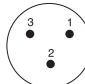
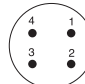
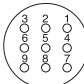
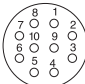
P : Plug PL : Right-angle plug  
PS : Short Plug Housing  
R : Receptacle (solder termination)  
RPCB : Receptacle (PCB termination)  
LRPCB : Right-angle Receptacle (PCB)  
blank : Adapter

### Option

S : Silver Plating contact

## ■ Major Performances / Contact Arrangements

Size / No. of Contacts	Size 8		
	4	5	6
Withstanding Voltage (per min) <sup>1</sup>	AC 300V	AC 300V	AC 300V
Current	2A	2A	2A
Insulation Resistance (Minimum) <sup>2</sup>	1,000M Ω	1,000M Ω	1,000M Ω
Contact Resistance (Maximum) <sup>3</sup>	10m Ω	10m Ω	10m Ω
Solder Pot Inside Diameter	ø 0.7	ø 0.7	ø 0.7
Wire Gauge (Maximum)	AWG26	AWG26	AWG26
Contact Arrangement			

Size / No. of Contacts	Size 10					
	2	3	4	9	10	12
Withstanding Voltage (per min) <sup>1</sup>	AC 500V	AC 500V	AC 500V	AC 300V	AC 300V	AC 300V
Current	3A	3A	3A	2A	2A	2A
Insulation Resistance (Minimum) <sup>2</sup>	1,000M Ω	1,000M Ω	1,000M Ω	1,000M Ω	1,000M Ω	1,000M Ω
Contact Resistance (Maximum) <sup>3</sup>	10m Ω	10m Ω	10m Ω	10m Ω	10m Ω	10m Ω
Solder Pot Inside Diameter	ø 1.0	ø 1.0	ø 1.0	ø 0.7	ø 0.7	ø 0.7
Wire Gauge (Maximum)	AWG20	AWG20	AWG20	AWG26	AWG26	AWG26
Contact Arrangement						

<sup>1</sup> Withstanding voltage is the tested voltage value in this table.

<sup>2</sup> Insulation resistance is measured at DC 100V.

<sup>3</sup> Contact resistance is measured at DC 1A.

• Values are from tested items and may not apply to all connectors.  
• Specifications subject to change without notice.  
• Consult Sam Woo Electronics for the latest specifications.  
<sup>4</sup> Connector contact arrangement is from mating surface.

**Contact Diameter**

$\phi$  0.55mm  $\phi$  1.0mm

## ■ Material Used / Finish

	Material	Finish
Body	Zinc alloy and brass	Ni Plating
Insulator	PA	Black
Contacts	Male	Brass
	Female	Phosphor bronze
		Gold or Silver Plating

# SN Series

## Mini-map

Push-pull type

Plug

SN Series

Plug

SN1 Series

Right-angle Plug

SN-10 Series

Plug

SNH Series

Plug

SN1H Series

Right-angle Plug

SNH-10 Series

Plug w / short Plug housing

SN-8 Series

Plug w / short Plug housing

SNH-8 Series

SN Series

SN PCB Series

Receptacle

SN-10 Series

Right Angle Receptacle

SNA Series

Adapter

SNH Series

SNH PCB Series

Receptacle

SNH-10 Series

Right Angle Receptacle

SNHA Series

Adapter

SN-8 Series

SN-8 Series

Right Angle Receptacle

SNH-8 Series

SNH-8 Series

Right Angle Receptacle

Screw on Type

Plug

SN2 Series

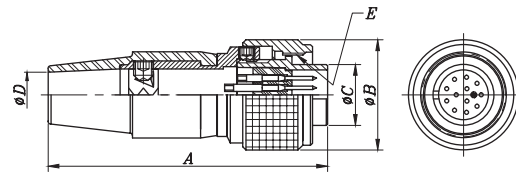
Receptacle

SN2 Series

SN2 Series

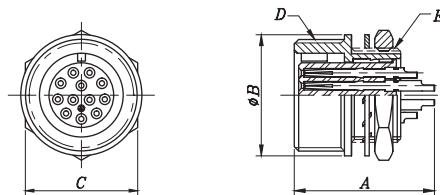
Adapter

## ■ SN2 Plug



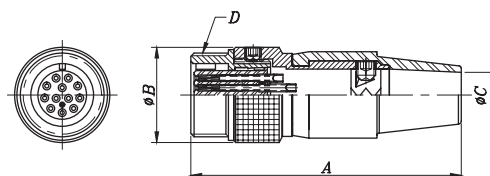
Product Number	A	ø B	ø C	ø D	E	Product Number	A	ø B	ø C	ø D	E
SN2-8-4 (P)		Coming soon				SN2-10-2 (P)	43,0	17,0	9,4	7,0	M13×0,75P
SN2-8-5 (P)						SN2-10-3 (P)					
SN2-8-6 (P)	35,1	12	7	5,1	M10×0,75P	SN2-10-4 (P)					
						SN2-10-9 (P)					
						SN2-10-10 (P)					
						SN2-10-12 (P)					

## ■ SN2 Receptacle



Product Number	A	Ø B	C	D	E	Product Number	A	Ø B	C	D	E
SN2-8-4 (R)			Coming soon			SN2-10-2 (R)	16,5	14	13	M13×0,75P	M11×0,75P
SN2-8-5 (R)						SN2-10-3 (R)					
SN2-8-6 (R)	14,4	10,9	10	M10×0,75P	M8×0,5P	SN2-10-4 (R)					
						SN2-10-9 (R)					
						SN2-10-10 (R)					
						SN2-10-12 (R)					

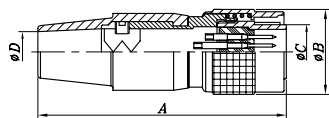
## ■ SN2A Adapter



Product Number	A	Ø B	Ø C	D	Product Number	A	Ø B	Ø C	D
SN2A-8-4	41,7	14,7	7,0	M13×0,75P	SN2A-10-2	41,7	14,7	7,0	M13×0,75P
SN2A-8-5					SN2A-10-3				
SN2A-8-6					SN2A-10-4				
					SN2A-10-9				
					SN2A-10-10				
					SN2A-10-12				

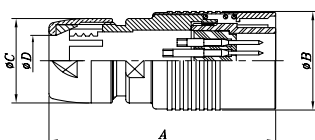
## SN Series Push-pull type SN Male Plug

### ■ SN Plug



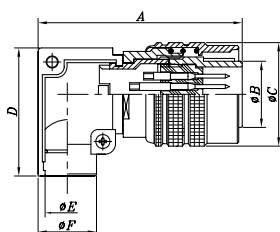
Product Number	A	ø B	ø C	ø D
SN-8-4(P)	35	11,5	7	5
SN-8-5(P)				
SN-8-6(P)				
SN-10-2(P)	43	14,9	9,4	7
SN-10-3(P)				
SN-10-4(P)				
SN-10-9(P)				
SN-10-10(P)				
SN-10-12(P)				

### ■ SN1 Plug



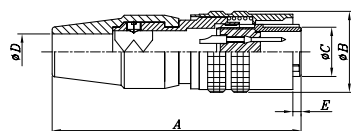
Product Number	A	ø B	ø C	ø D
SN1-8-4(P)	28	11,0	9,0	5,2
SN1-8-5(P)				
SN1-8-6(P)				
SN1-10-2(P)	32	14,0	12,0	7,2
SN1-10-3(P)				
SN1-10-4(P)				
SN1-10-9(P)				
SN1-10-10(P)				
SN1-10-12(P)				

### ■ SN Right-Angle Plug



Product Number	A	ø B	ø C	D	ø E	ø F
SN-8-4(PL)	25,9	7,0	11,5	14,6	5,0	6,6
SN-8-5(PL)						
SN-8-6(PL)						
SN-10-9(PL)	29,0	9,4	14,9	18,2	6,3	8,3
SN-10-10(PL)						
SN-10-12(PL)						

### ■ SN Plug (Short plug housing)

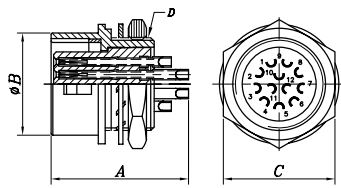


Product Number	A	ø B	ø C	ø D	E
SN-8-4(PS)	35,0	11,5	7,0	5,1	0,6
SN-8-6(PS)					

## ■ SN Receptacle

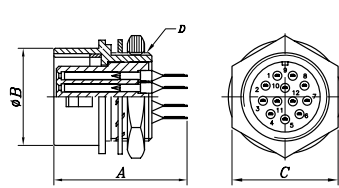


SN-10-12(R)



Product Number	A	φ B	C	D
SN-8-4 (R)	14,5	8,8	10,0	M8×0,5P
SN-8-5 (R)				
SN-8-6 (R)				
Product Number	A	φ B	C	D
SN-10-2 (R)	15	11,9	13,0	M11×0,75P
SN-10-3 (R)				
SN-10-4 (R)				
SN-10-9(R)	16,5			
SN-10-10(R)				
SN-10-12(R)				

## ■ SN PCB Receptacle



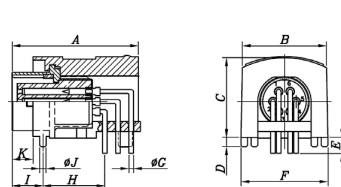
SN-10-12(RPCB)

Product Number	A	φ B	C	D
SN-8-4 (RPCB)	15,7	8,8	10	M8×0,5P
SN-8-5 (RPCB)				
SN-8-6 (RPCB)				
Product Number	A	φ B	C	D
SN-10-2 (RPCB)	16,2	11,9	13	M11×0,75P
SN-10-3 (RPCB)				
SN-10-4 (RPCB)				
SN-10-9(RPCB)				
SN-10-10(RPCB)				
SN-10-12(RPCB)				

## ■ SN Right Angle PCB Receptacle (Any Type)



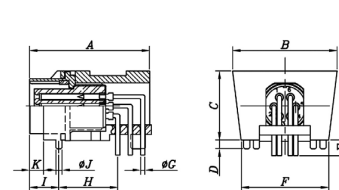
SN-8-6(LRPCB)K



Product Number	A	B	C	D	E	F	φ G	H	I	φ J	K
SN-8-4 (LRPCB)K	19,2	12,8	12,0	1,3	2,4	13,2	0,7	9,4	4,7	1,0	3,2
SN-8-6 (LRPCB)K											

! SN-8-4(LRPCB)K1, SN-8-6(LRPCB)K1 only mates with SN-8-4(PS), SN-8-6(PS) plugs.

## ■ SN Right Angle PCB Receptacle (Magic Type)



SN-8-6(LRPCB)K1

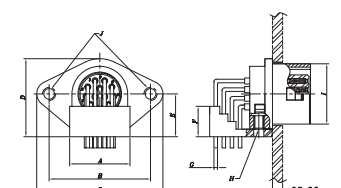
Product Number	A	B	C	D	E	F	φ G	H	I	φ J	K
SN-8-4(LRPCB)K1	19,2	16,7	11,0	1,3	2,4	14,0	0,7	9,4	4,7	1,0	2,2
SN-8-6(LRPCB)K1											

! SN-8-4(LRPCB)K1, SN-8-6(LRPCB)K1 only mates with SN-8-4(PS), SN-8-6(PS) plugs.

## ■ SN Right Angle PCB Receptacle



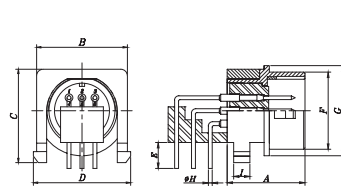
SN-10-12(LRPCB)



Product Number	A	B	C	D	E	F	φ G	H	φ I	J
SN-10-12(LRPCB)	11,9	20	24,9	15,4	8,5	6	0,7	M2,0 ×0,4P	11,9	M2,6 ×0,45P

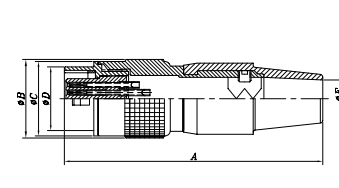


SN-10-9(LRPCB)K



Product Number	A	B	C	D	E	F	G	φ H	I
SN-10-9(LRPCB)K	12	14	14,3	15	3	11,9	13,9	0,7	2,5

## ■ SNA Adapter

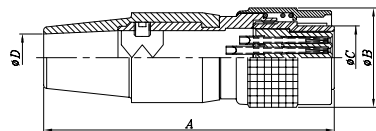


SNA-10-12

Product Number	A	φ B	φ C	φ D	φ E
SNA-8-4	40,2	11,5	10,9	8,8	5,1
SNA-8-5					
SNA-8-6					
Product Number	A	φ B	φ C	φ D	φ E
SNA-10-2	48,0	14,9	13,9	11,9	7,0
SNA-10-3					
SNA-10-4					
SNA-10-9					
SNA-10-10					
SNA-10-12					

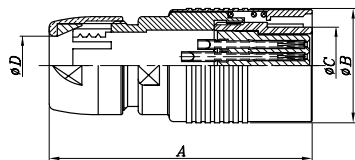
## SN Series Push-pull type SNH Female Plug

### ■ SNH Plug



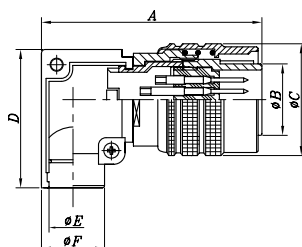
Product Number	A	Ø B	Ø C	Ø D
SNH-8-4(P)	35	11,5	7	5
SNH-8-5(P)				
SNH-8-6(P)				
SNH-10-2(P)	43	14,9	9,4	7
SNH-10-3(P)				
SNH-10-4(P)				
SNH-10-9(P)				
SNH-10-10(P)				
SNH-10-12(P)				

### ■ SN1H Plug



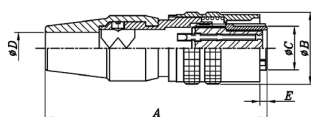
Product Number	A	Ø B	Ø C	Ø D
SN1H-8-4(P)	28	11,0	9,0	5,2
SN1H-8-5(P)				
SN1H-8-6(P)				
SN1H-10-2(P)	32	14,0	12,0	7,2
SN1H-10-3(P)				
SN1H-10-4(P)				
SN1H-10-9(P)				
SN1H-10-10(P)				
SN1H-10-12(P)				

### ■ SNH Right Angle Plug



Product Number	A	Ø B	Ø C	D	Ø E	Ø F
SNH-8-4(PL)	25,9	7,0	11,5	14,6	5,0	6,6
SNH-8-5(PL)						
SNH-8-6(PL)						
SNH-10-9(PL)	29,0	9,4	14,9	18,2	6,3	8,3
SNH-10-10(PL)						
SNH-10-12(PL)						

### ■ SNH Plug (Short plug housing)

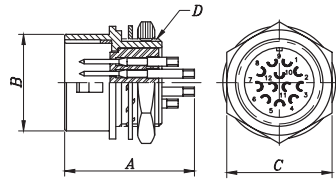


Product Number	A	Ø B	Ø C	Ø D	E
SNH-8-4(PS)	35,0	11,5	7,0	5,1	0,6
SNH-8-6(PS)					

## ■ SNH Receptacle

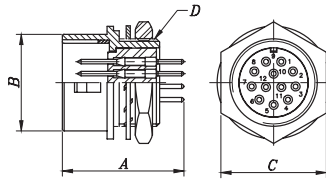


SNH-10-12(R)



Product Number	A	φ B	C	D
SNH-8-4 (R)	14,2	8,8	10,0	M8×0,5P
SNH-8-5 (R)				
SNH-8-6 (R)				
SNH-10-2(R)	16,2	11,9	13,0	M11×0,75P
SNH-10-3(R)				
SNH-10-4(R)				
SNH-10-9(R)				
SNH-10-10(R)				
SNH-10-12(R)				

## ■ SNH PCB Receptacle



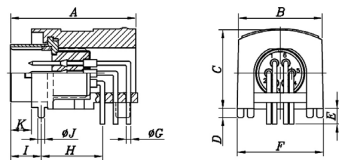
SNH-10-12(RPCB)

Product Number	A	φ B	C	D
SNH-8-4(RPCB)	15	8,8	10	M8×0,5P
SNH-8-5(RPCB)				
SNH-8-6(RPCB)				
SNH-10-2(RPCB)	15	11,9	13	M11×0,75P
SNH-10-3(RPCB)				
SNH-10-4(RPCB)				
SNH-10-9(RPCB)				
SNH-10-10(RPCB)				
SNH-10-12(RPCB)				

## ■ SNH Right Angle PCB Receptacle (Any Type)



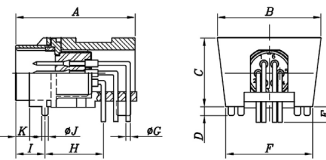
SNH-8-6(LRPCB)K



Product Number	A	B	C	D	E	F	φ G	H	I	φ J	K
SNH-8-4(LRPCB)K	19,2	12,8	12,0	1,3	2,4	13,2	0,7	9,4	4,7	1,0	3,2
SNH-8-6(LRPCB)K											

! SNH-8-4(LRPCB)K1, SNH-8-6(LRPCB)K1 only mates with SN-8-4(PS), SN-8-6(PS) plugs.

## ■ SNH Right Angle PCB Receptacle (Magic Type)



SNH-8-6(LRPCB)K1

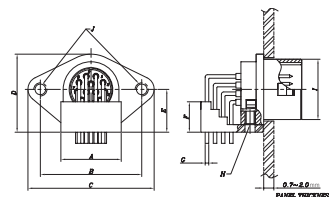
Product Number	A	B	C	D	E	F	φ G	H	I	φ J	K
SNH-8-4(LRPCB)K1	19,2	16,7	11,0	1,3	2,4	14,0	0,7	9,4	4,7	1,0	2,2
SNH-8-6(LRPCB)K1											

! SNH-8-4(LRPCB)K1, SNH-8-6(LRPCB)K1 only mates with SNH-8-4(PS), SNH-8-6(PS) plugs.

## ■ SNH Right Angle PCB Receptacle



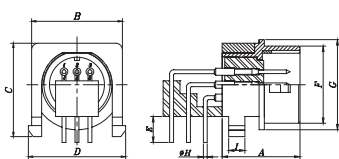
SNH-10-12(LRPCB)



Product Number	A	B	C	D	E	F	φ G	H	φ I	J
SNH-10-12(LRPCB)	11,9	20	24,9	15,4	8,5	6	0,7	M2,0 ×0,4P	11,9	M2,6 ×0,45P

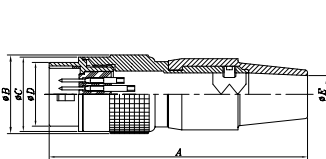


SNH-10-9(LRPCB)K



Product Number	A	B	C	D	E	F	G	φ H	I
SNH-10-9(LRPCB)K	12	14	14,3	15	4	11,9	13,9	0,7	2,5

## ■ SNHA Adapter

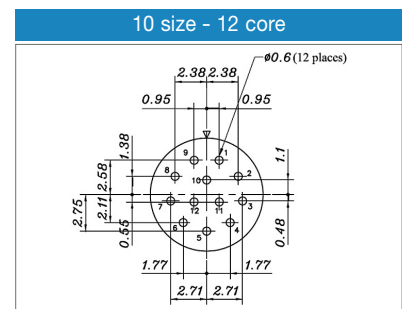
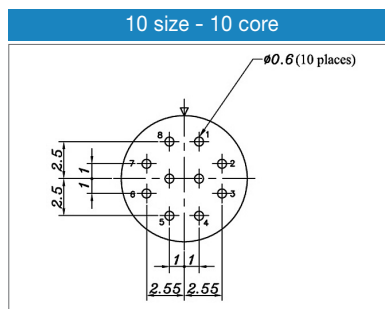
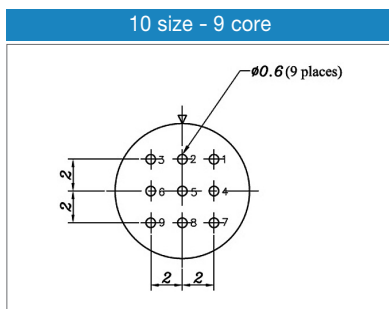
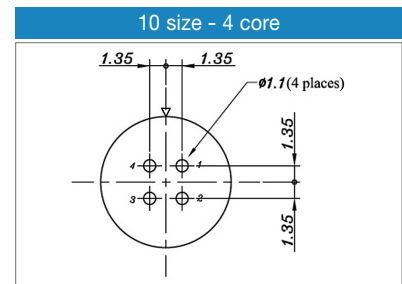
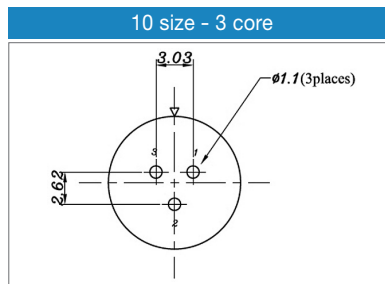
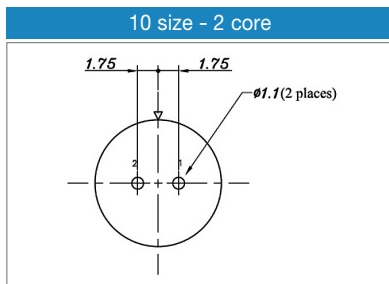
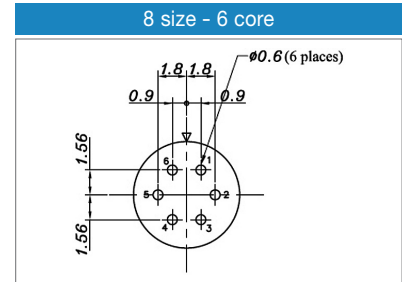
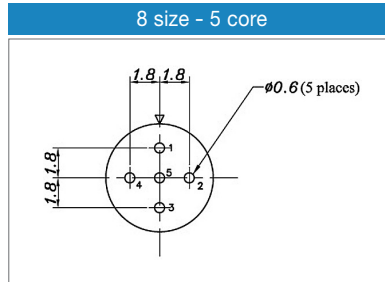
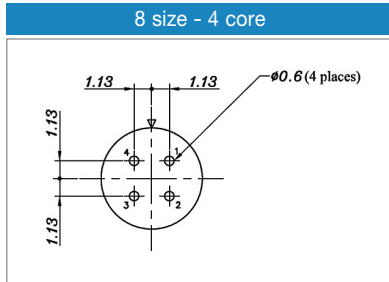


SNHA-10-12

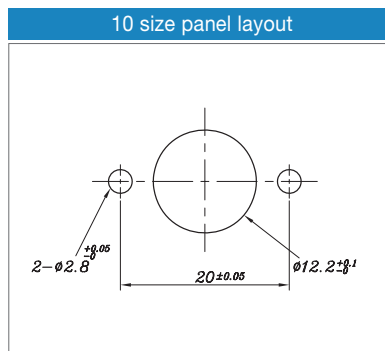
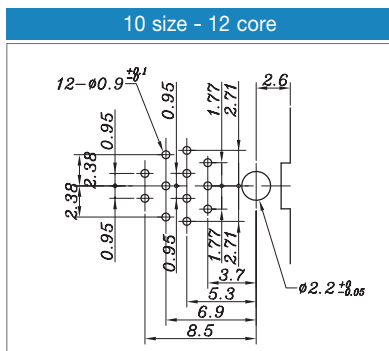
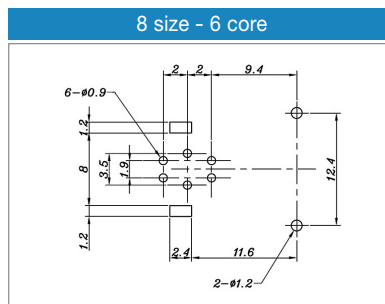
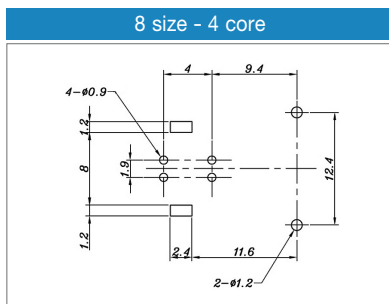
Product Number	A	φ B	φ C	φ D	φ E
SNHA-8-4	40,2	11,5	10,9	8,8	5,1
SNHA-8-5					
SNHA-8-6					
SNHA-10-2	48,0	14,9	13,9	11,9	7,0
SNHA-10-3					
SNHA-10-4					
SNHA-10-9					
SNHA-10-10					
SNHA-10-12					



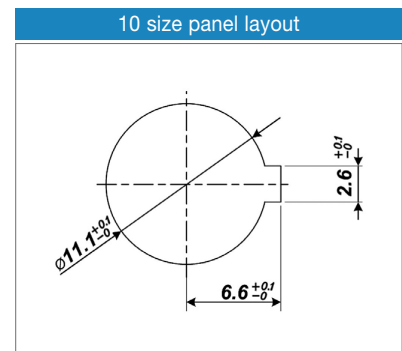
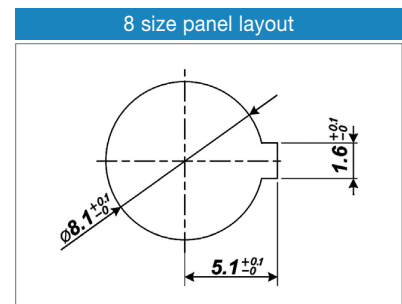
## ■ SN Receptacle PCB Hole Layout



## ■ SN Receptacle Right Angle PCB Hole Layout



## ■ SN Receptacle Panel Layout



# SN Series Cable Assembly Instruction

## General Instruction / Information

- Diagram 1 shows a sample wiring for SN series.
- Soldering must be done quickly and carefully to prevent damage to insulator.
- Receptacles do not require additional instructions.
- Specification of Nut

Size	Nut Specification	Nut Tightening force
SN - 8	M8 × 0,5P	15~18(kgf · cm)
SN - 10	M11 × 0,75P	20~23(kgf · cm)

## Wiring Sequence

- Select cable according to outer diameter and cross section, lower than 0.129mm<sup>2</sup>(AWG#26).
- Insert RUBBER BUSHING to cable.
- Insert PLUG HOUSING to cable.
- Strip cable per dimension given and loosen braid.
- Secure PLUG BODY to jig for soldering.
- Solder stripped cable to pin.
- Fasten CRIMP using hand crimp tool (SA-HCT<sup>①</sup>)
- Lock PLUG HOUSING and PLUG BODY using tightening force displayed on Table 1.
- Tighten WRENCH BOLT using 0.3N force onto one of two embossed parts of crimp.
- Cover RUBBER BUSHING onto PLUG HOUSING.

<sup>①</sup> See below for information on SA-HCT.

Diagram 1

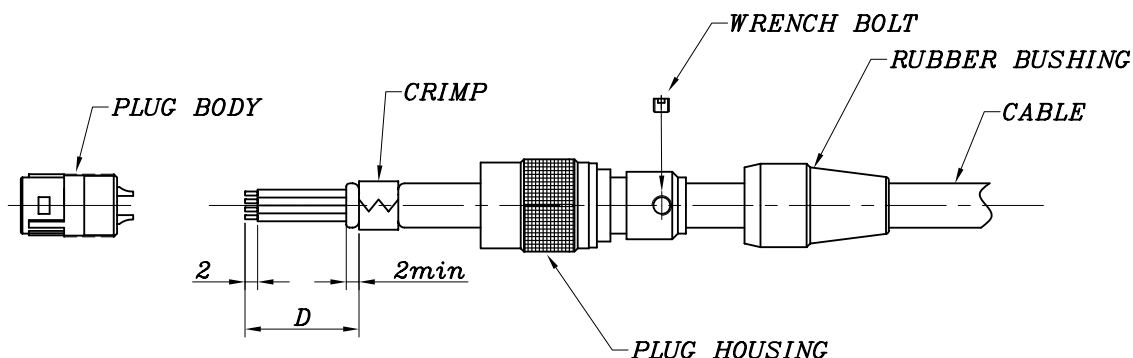


Table 1

unit : mm

Size	Spanner Jaw	D (Dimension)	Tightening Force	Notes
SN - 8	8	10	1,5N · m (15kgf · cm)	SA-HCT size $\phi$ 5,5
SN - 10	10	16	2,0N · m (20kgf · cm)	SA-HCT size $\phi$ 7,0

## SA-HCT (Hand Crimp Tool)



Specially designed for Sam Woo's connector, the low-cost and efficient SA-HCT provides the best crimping results.

